



assess, act and report

sfeeri biodiversity engine

christian.dietrich@sfeeri.com
0049 152 5393 3221





01

We depend on nature, but we're losing it

The current rate of **nature loss** is up to 1000x accelerated through human activity. Up to 150 species are lost – every single day.

According to the WEF, \$44 trillion of economic value generation – over half the world's total GDP – is **dependent** on nature and its services and, as a result, exposed to **risks** from nature loss. [LINK](#)

Most business activities have a big **impact** on the loss of nature, through own operations and global supply chains – [LINK](#)

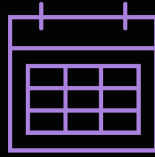
02

Until now, biodiversity assessments were too demanding and hard to scale



Expensive

> needing highly trained scientific experts



Time consuming

> requiring prolonged field studies, 1-3 months



Not scalable

> assessing only a limited number of locations



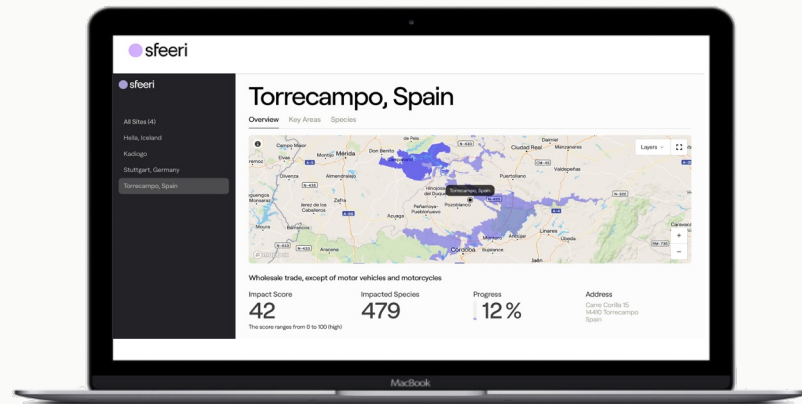
Difficult to implement

> providing no flexibility in reporting format

We have developed the first solution to change this

03

What our clients see: easily assess, act and report on biodiversity impact

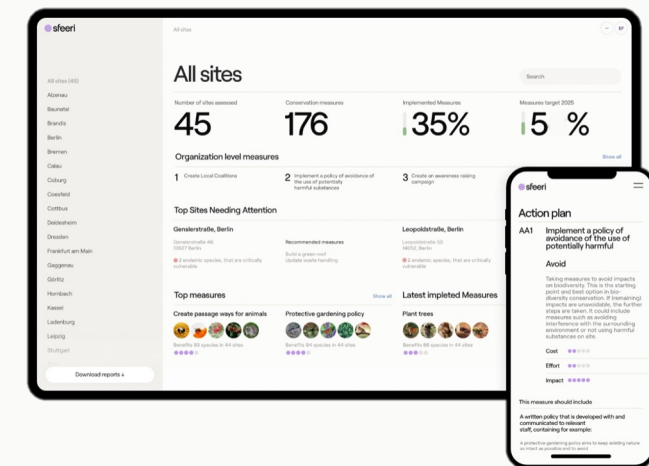


Assessment

Create connections between natural habitats (wildlife corridors)					RESTORE
Code	Recommendation	Impact	Effort	Complete...	
REC-57	Plant dense hedges or trees along the roads to connect green islands	●●●●●	●●●●●	Complete...	
REC-118	Create mini forests: they can improve the situation for biodiversity in a small area Show More	●●●●●	●●●●●	Complete...	
REC-55	Install plastic linings with bucket traps for regular transfers over streets to breeding areas such as ponds (for amphibians like toads, frogs, salamanders)	●●●●●	●●●●●	Complete...	
REC-117	Wherever there is space, plant native and site-adapted species of trees, shrubs and flowering plants	●●●●●	●●●●●	Complete...	
REC-56	Provide small passage ways for animals in those areas where a green space is surrounded by walls. This can for example be created by removing one or two stones from the lower part of walls	●●●●●	●●●●●	Complete...	
REC-58	Provide toad passages, e.g. in speed bumps	●●●●●	●●●●●	Complete...	

Connections between natural habitats allow animals to move safely between habitats. They reduce the isolation of species and thus reduce inbreeding (an important factor in species extinction). They are therefore very important for the migration, dispersal and genetic exchange of species.

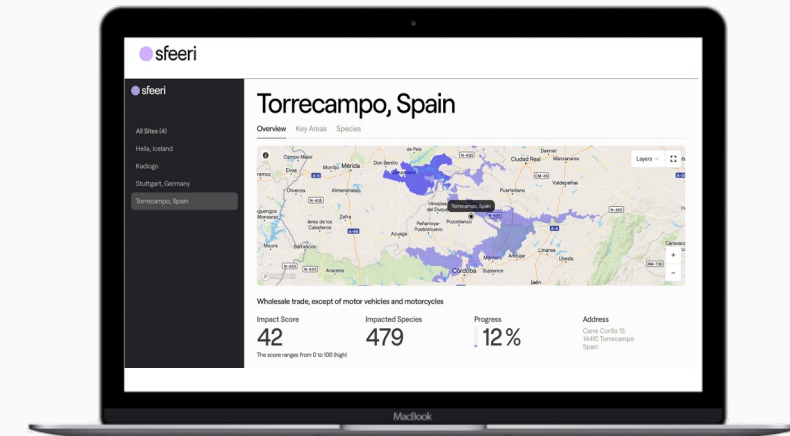
Action Plan



Reporting

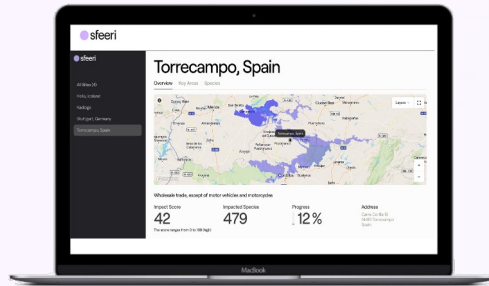
04 The sfeeri biodiversity engine: Fast results with minimum input

- > Digital twin of nature from big data analysis
- > AI-enhanced selection of impact mitigation actions
- > Fully automatized process

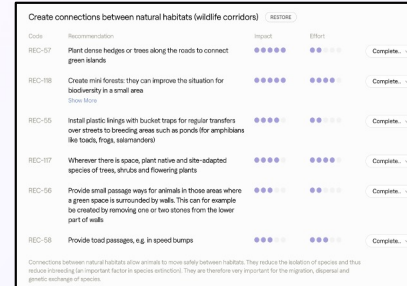


05

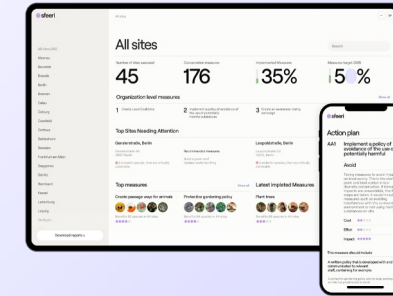
The go-to nature data platform



Impact Assessment



Action Plan



Reporting

- Easy to use, non-expert compatible and low cost
- Own operations and global supply chains analysed at once
- No data upfront required!



christian.dietrich@sfeeri.com
0049 152 5393 3221