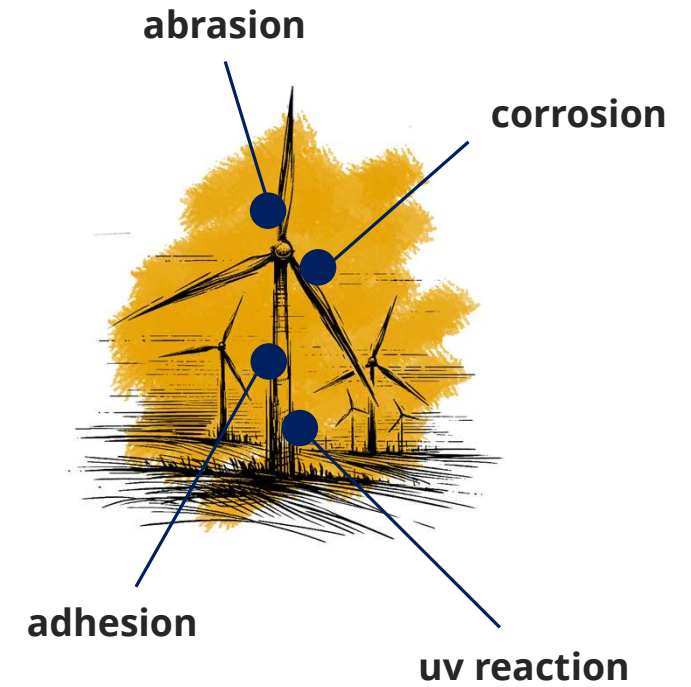
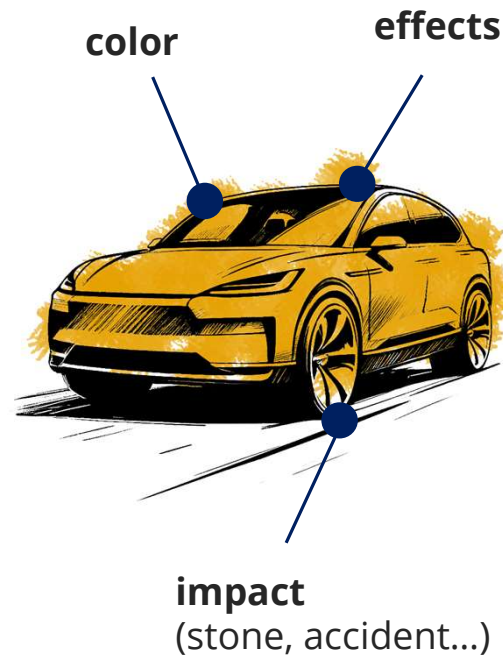
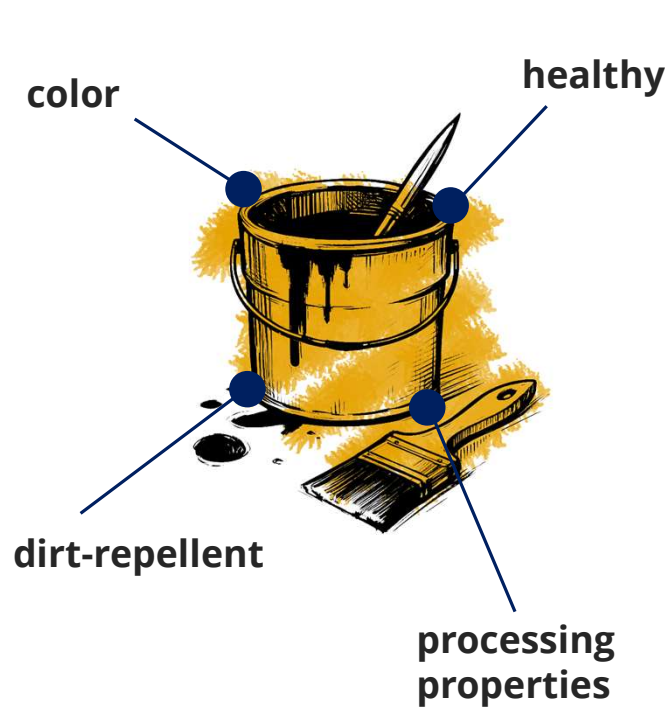


SMART AI-FORMULATIONS

AI use in an industrial environment

5. Sustainability Circle "Impact-Startup Pitch Event"
mit dem HTGF & Zühlke, September 2024

COATINGS



PROPERTIES

many ingredients

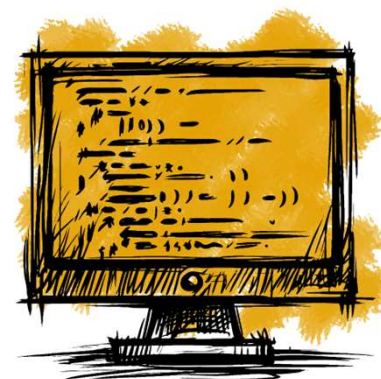
non-linear,
error intolerant

bundle of
chemical and
physical
properties

not always color



formulation



**The higher the complexity, the higher the pain,
the better for us!**

DAILY STRUGGLES

high qualified staff
but not enough

experience
but few new blood

analysis tools & software
but expensive and aged

data
but distributed
and unstructured

hardly any time to
improve anything

unfortunately, constantly
increasing requirements
in a big market

- new formula takes weeks
- unavoidable waste of time & money
- only daily business

Ai-predict CAN HELP



**CUSTOMER
LAB DATA**



- calculating properties with industry-typical ai-models
- speed up R&D + lower costs (staff, raw materials, energy,...)
- formulation by design
- webbased, scalable, developed & in use

Properties, Applications, Sustainability

formulation



Customer's challenges und ai-predict experience

- **Complex formulations for coatings**
 - color, effects, corrosion, UV, energy and material consumption,...
 - Optimization of ingredients (e.g. fewer raw materials, alternative ingredients,...)
 - Exchange of materials (change of supplier, environmental regulations,...).
- **complex formulations for special chemistry**
 - adhesives, insulating materials, wax, etc.

CONTACT



Thomas Zeler

CEO – Geschäftsführer
Thomas.Zeler@ai-predict.de
+49 171 8105 994



Dr. Mathias Huck

Head of Sales
Mathias.Huck@ai-predict.de
+49 170 3281 473